

# NOLTING ESTATE AUCTION



Dale C. Nolting will sell the **personal property of the Mark C. Nolting Estate** at public auction on:

**Saturday, October 28th, Beginning at 9:00 AM.**

**Location:** 1704 Hecker Road Owensville Mo 65066

**Directions:** From Interstate 44, take Exit #208 in Cuba and go North on Highway 19 15 miles to Hecker Road. Turn left on Hecker and go 3 miles to auction. From Owensville, go South on Highway 19 5 miles and then right on Hecker to auction. Roads will be marked day of sale.

## RESTORED STREET ROD (will sell at 12:00 Noon)



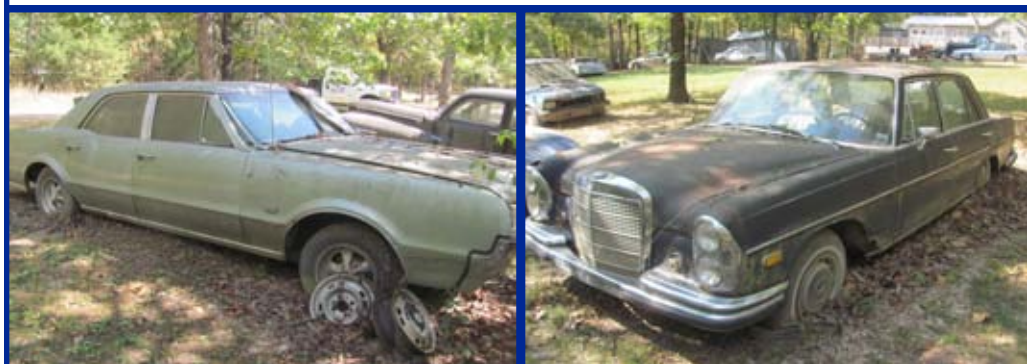
1932 Plymouth 3 window coupe auto-350 small block-400 turbo-original steel body-many original parts-some modifications-high capacity radiator-12 volt electrical system-new steering box-column-suicide doors, coupe auto parts



## CLASSIC CARS / PROJECT CARS (will sell after street rod at Noon)



1948 Dodge V8-350 w/400 turbo-suicide doors, 1948 Studabaker 6100 3/4 ton truck, 1962 Ford Galaxie 2 door, 1966 Oldsmobile F85 four door, 1968 VW, 1969 Chevy van, 1969 Mercedes Benz, 1971 Cadillac Coupe DE Ville-472 V8 engine-original, 1974 Ford van, 1975 Chevy Silverado K10, 1975 Chevrolet Suburban, 1977 Chevrolet Chevette, 1978 Datsun 280Z, 1978 Mazda 2 door, 1978 Mazda RX7, 1980 Ford pick up, 1980 Chevrolet Chevette, 1982 Mazda truck, 1983 Mazda truck, 1983 Chevy van, 1986 Pontiac Fiero, 1987 Yugo, 1988 Mazda RX7, 1988 Mazda 323, 1992 Cadillac Deville Sedan, 1999 Dodge Durango, **PARTS**; Chevy SS console, 427 big block engine, auto spotlights, lot of misc. auto parts, hub caps, wheels



## ~~~~ AUCTIONEERS NOTE ~~~~

**Skidsteer will be available for loading assistance at the end of the auction.**

## HARLEY DAVIDSON MOTORCYCLES / TRAILERS



1961 Harley Davidson-61FLH1640-pan head-Jean Crane 4 speed transmission-police solo seat, 1973 Harley Davidson Sportster Ironhead 1000CC, 1980 HD motorcycle, Boss Hawg motorcycle-FLH Harley frame-V8 350 engine-wide glide front end-instruments-direct drive-radiator, Honda 125 3 wheeler ATV's, **MOTORCYCLE FRAMES**; HD Rigid, Big Twin Sportster frame, **TRAILERS**; Harley Davidson custom fiberglass luggage trailer, original HD wooden coffin side car-Panhead frame

## MOTORCYCLE PARTS



**LOTS OF VINTAGE IRON HEAD SPORTSTER/PAN HEAD AND SHOVEL HEAD** motorcycle parts including; rear drive wheels, 21" brake wheel, K Model wheels, HD custom 21" front chopper wheel, Sportster rear drive wheels-front wheels, Electra Glide seats, Electra Glide dresser seats w/buddy racks, speedometer units, kick stands, shocks, valve head covers, HD front controls, horns, motor mounts, 4 speed transmission case-Pan Head, 12 volt generators, PH solo seats, air breather, piston rings, primary covers, new chrome primary covers, crank case parts, kicker drums, Big Twin narrow glide spring front ends, push drives, carburetors, push rods, fuel pumps, PH swing arm frame, front-rear fenders, chopper seats, SH primary cases, Electra Glide saddle bags-windshield, HD crash guards, wheelie bars, handle bars, exhaust systems, headlight assemblies, chrome chain guards, Hurst 4 speed shifters, HD Sportster engine-for parts, clutch pack, clutch covers, PH clutch assembly, air cleaners, Big Twin oil tanks, cam covers, PH dress covers, chain guards, bolt on hard tails, starters, generators, PH luggage racks, shifter knobs, foot shifts, running lights

## CLOCKS / COLLECTIBLES



Regulator wall clock with calendar dial, (4) Gingerbread kitchen clocks, Ansonia mirror side clock with cherubs, Ansonia tear drop clock, leather motorcycle jackets, vest, helmets, saddle bags, lots motorcycle magazines-books, HD street sign, BAR training rifle, military helmets, milk can, picnic table, Zenith radio, gun cabinet, deer mounts, beer can collection, radios, Mercury boat motor, car radios, chain saw, beer tappers-kegs, Schlitz woman beer tapper pull

**LUNCH WILL BE SERVED BY CAROLS CATERING**

**MANY MORE ITEMS TOO  
NUMEROUS TO MENTION**

**SEE MORE PICTURES AT OUR WEBSITE  
[www.breheauction.com](http://www.breheauction.com)**

**BREHE AUCTIONEERING SERVICE, LLC**  
 Union, MO: (636) 583-0841 Owensville, MO: (573) 437-3454  
[www.breheauction.com](http://www.breheauction.com)  
 LICENSED AUCTIONEERS:  
 Kerry Brehe 314.954.3798 Josh Brehe 314.603.3129 Harry Engelhart 636.399.3743  
 Announcements made day of sale supersede all printed material.  
**TERMS:** CASH, PERSONAL CHECKS WITH PROPER I.D., BUSINESS CHECKS WITH BANK LETTER AND NO OUT OF STATE CHECKS UNLESS APPROVED BY SELLER. Email Us At [kkauktion@sbcglobal.net](mailto:kkauktion@sbcglobal.net)  
 Everything sells as is with no guarantees.

